



Shaping practices
Influencing policies
Impacting lives

2019

**Annual
Report**

IMPACT

TABLE OF CONTENTS

Foreword	3
Our Aim	4
Our Work	5
Our Initiatives	6
Our Impact	7
Country Cards	10-14
Afghanistan	
Bangladesh	
Central African Republic	
Iraq	
Jordan	
Libya	
Nigeria	
Uganda	
Ukraine	
Somalia	
South Sudan	
Syria	
Tri-border area (Burkina Faso, Mali, Niger)	
Yemen	
Rapid Deployments	15
Indonesia	
Mozambique	
Financial Overview	16
Governance	17
Partnerships	18-19

FOREWORD

We are releasing our 2019 IMPACT Initiatives annual report against the backdrop of a global pandemic. While the long term consequences of COVID-19 are yet to be known, we can already see how this pandemic has exacerbated existing humanitarian needs and triggered new emergencies. Accurate data and innovation in aid is critical to ensure humanitarian, development and stabilization actors keep pace with the changing nature of global crises. The work of IMPACT, producing accurate and timely data to track changing needs and identifying and sharing humanitarian best practices to respond to these needs, has never been more critical.

Our annual 2019 report shows we are able and ready to respond to these crises. In 2019 we produced information products on 23 humanitarian crises, sharing findings and collaborating with over 980 humanitarian partners.

Through REACH, we have rolled out nation-wide multi-sector needs assessments in 9 countries, providing baseline data to help understand acute need for annual humanitarian planning . We have launched humanitarian situation monitoring, a tool designed to track needs in hard to reach locations, in over 12 countries. Together with cash working groups in over 8 countries, we have worked to build a harmonized price monitoring system. In late 2019, building on our close partnership with the global WASH cluster, together with UNICEF and the Centre for Humanitarian Change, we have launched the WASH Severity Classification, a multi-agency initiative to establish a comprehensive and comparable method to measure the severity of WASH needs.

Through our AGORA initiative, implemented in partnership with ACTED, in Afghanistan, the Central African Republic, Niger, and Nigeria, we are practically demonstrating how to implement area based responses to support communities affected by crises. Since the inception of the PANDA initiative in 2011, we have supported a total of 33 donors to better plan, monitor, and evaluate their programs across 18 countries.

Together this work represents a momentum for change and the critical role data must and should play in ensuring more effective and principled humanitarian and development interventions. I would like to take this opportunity to thank all our partners and our team members for their commitment and dedication.



Luca Pupulin
Executive Director
IMPACT Initiatives

OUR AIM

IMPACT Initiatives (IMPACT) is a leading Geneva-based think and do tank, created in 2010. IMPACT aims to shape practices and influence policies in humanitarian and development settings in order to positively impact the lives of people and their communities.

SHAPING PRACTICES
INFLUENCING POLICIES
IMPACTING LIVES

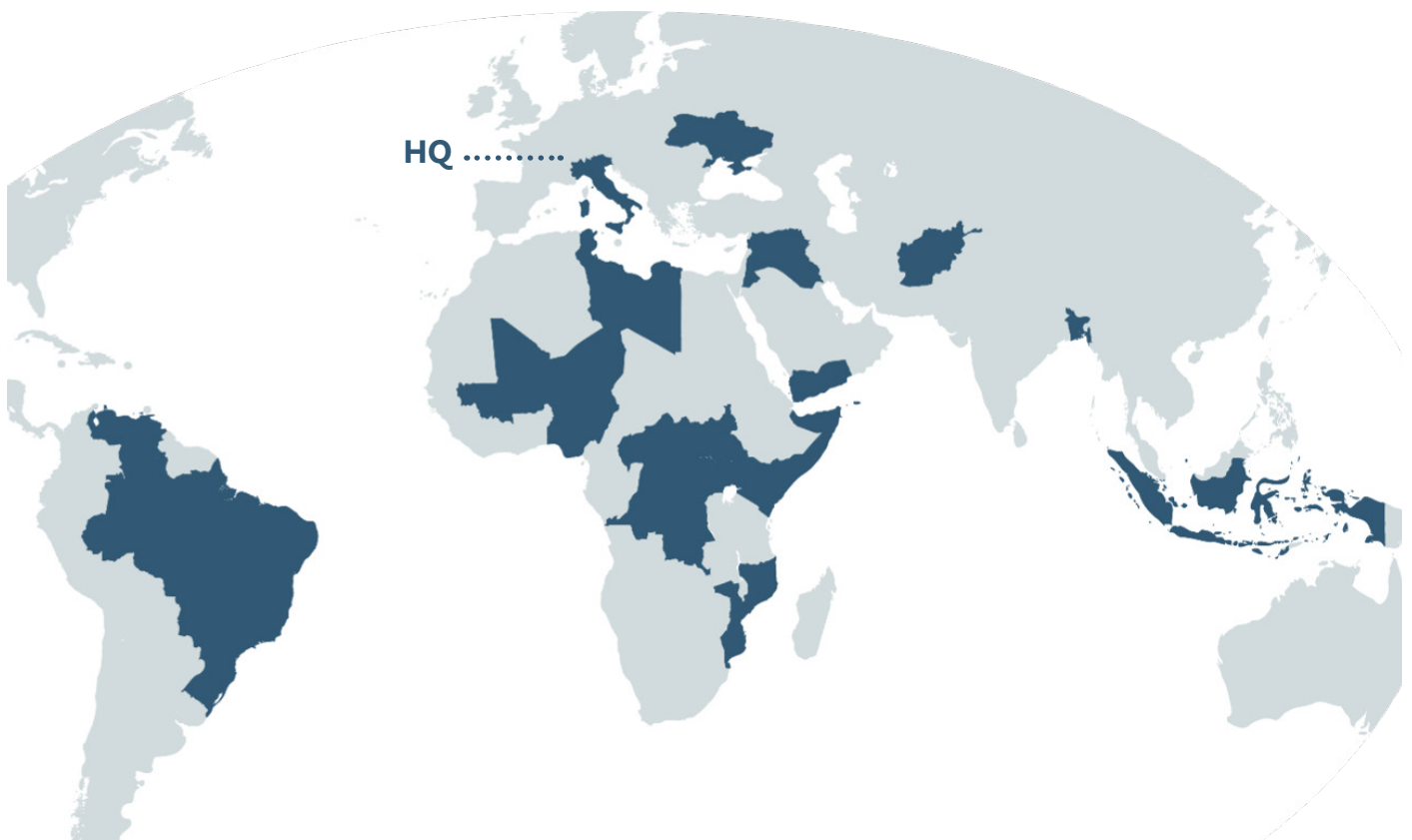
VISION

To act as a **catalyst of change** for aid practices and policies in order to sustainably impact individuals and their communities.

MISSION

To shape practices and influence policies in humanitarian and development settings in order to positively impact individuals and communities. We, as a think and do-tank, **enable better and more effective decision-making by generating and promoting knowledge, tools and best-practices for humanitarian and development stakeholders**. We believe that by understanding settlements through the lens of community dynamics, governance structures and socio-economic relationships, we can positively impact the lives of people, improve communities' development pathways and contribute to a fairer world.

WHERE WE WORK



OUR WORK

In order to facilitate the effective and efficient delivery of aid to vulnerable populations, there is a persistent need for a robust evidence base that enables aid actors to tailor responses in ways that address the needs of the most vulnerable. Despite this, aid actors continue to face significant challenges in gathering and effectively using data in a coordinated, appropriate and comprehensive way for response planning and implementation. As a result, crises are often characterised by critical information gaps for designing and planning aid in a timely and effective manner.

Since its inception in 2010, IMPACT's mission has been to shape practices, influence policies and positively impact the lives of affected populations through the promotion of knowledge, information tools, and data collection practices across different crises around the globe. This is achieved through the workstream of IMPACT's three initiatives: REACH, PANDA, and AGORA.

To reach its aim of promoting knowledge, tools and practices for better and more effective decision-making in humanitarian and development contexts in 2019, IMPACT increased the implementation of data collection exercises by over 25%. This expansion is due to the increase in the type of activities undertaken by IMPACT in countries where it was already present as well as the expansion of its geographical coverage.



2,800 information products (reports, fact-sheets, maps, briefs, etc.) were published over the course of the year



Over 130,000 downloads were generated through transparent & open-access to IMPACT information products



980 humanitarian, development, and national actors have contributed to presentations and briefings held by IMPACT staff



Data from IMPACT was referenced in over 860 strategic & operational external documents



Through its initiatives IMPACT conducted over 200 research cycles - increasing its activity by 25% since 2018

OUR INITIATIVES

IMPACT activities are structured around three programmatic streams:

REACH **Informing more effective humanitarian action**

In contexts of conflict, disaster, and displacement, humanitarian actors face serious challenges in collecting data in a systematic and comprehensive way. As a result, there are often significant gaps in the information required for designing and planning aid, and a limited understanding of crisis-affected communities. To address these gaps, **REACH strengthens evidence-based humanitarian decision-making through efficient data collection, management and analysis.**

Since its inception, REACH has developed into a leading global initiative. All REACH research is conducted in the framework of humanitarian coordination and planning platforms. To implement REACH, IMPACT is supported by ACTED in terms of operational capacity and by UNOSAT in terms of technical expertise relating to remote sensing.

AGORA **Localised Response Inclusive Recovery Effective Stabilisation**

AGORA aims at promoting localised and multi-sectoral aid action in support of the recovery and stabilisation of crisis-affected communities. **AGORA's action uses settlements as the territorial unit for planning, coordinating and delivering aid and basic services. AGORA is also focused on finding and strengthening synergies between local actors and exogenous aid stakeholders.**

AGORA is implemented in partnership with ACTED. Over the course of 2019 AGORA projects were implemented in Afghanistan, the Central African Republic, Niger, and Nigeria.

PANDA **Enhancing impact Increasing accountability Accelerating change**

Project Assessment and Appraisals (PANDA) is IMPACT's initiative which **directly supports aid actors to improve the effectiveness, efficiency, and efficacy of their programmes.** PANDA supports partners across their project cycle, including programme design, assessments, monitoring and evaluation. PANDA works through bi-lateral relationships with key decision makers with all project deliverables being the partners' property.

During 2019, a total of 23 projects were implemented in Iraq, Jordan, Kenya, Nigeria, Somalia, South Sudan, Syria, Ukraine, and at the global level too, to inform the project design and decision-making of 15 different donors and UN agencies.

OUR IMPACT

IMPACT aims at informing humanitarian decision-making with reliable evidence so the needs and vulnerabilities of crisis-affected populations are addressed in a targeted and effective manner. We monitor our impact through M&E processes conducted at the end of individual research cycles and yearly.



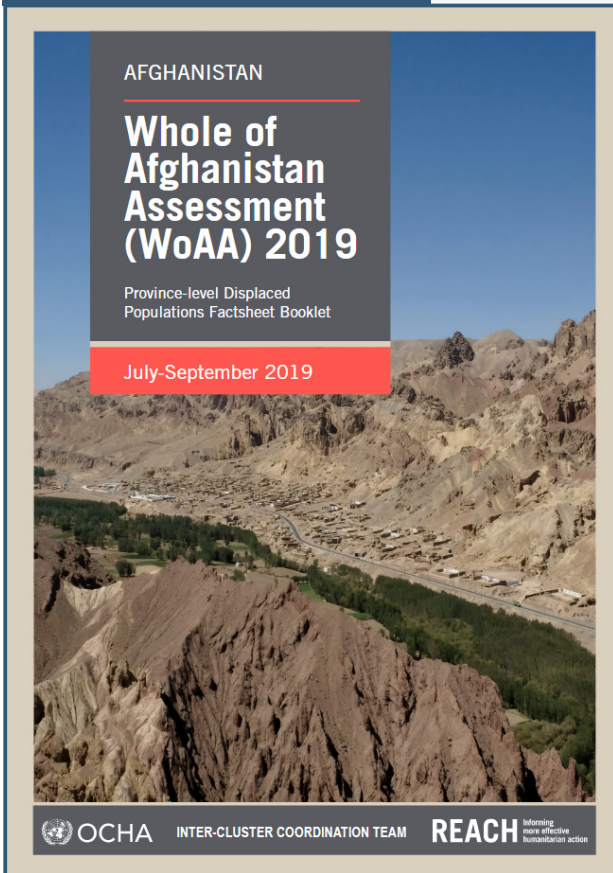
Focus-group discussion between IMPACT staff and affected populations in South Sudan.

“ The 2020 HPC is underpinned by **the largest data collection in CAR since 2016, notably thanks to a multi-sector needs assessment** that covered 9,000 households in over 500 localities - **2020 Global Humanitarian Needs Overview, OCHA**

“ According to a REACH 2019 assessment, some 95 per cent of households with people with disabilities in the Non-Government Controlled Area reportedly do not receive any care support services. The allocation **enabled humanitarian organisations on the ground to urgently scale up collective humanitarian action to target and address the needs of people** with disabilities and elderly people - **2019 Annual Report, Ukraine Humanitarian Fund**

“ An inter-sectoral analysis of needs in Afghanistan reveals a clear pattern of overlapping sectoral requirements. **This nationwide spread of simultaneous and complex needs sends a strong message about the corresponding need for integrated responses which address affected people’s needs more holistically and efficiently** from multiple angles, rather than through siloed, cluster-based activities - **2020 Afghanistan Humanitarian Needs Overview, OCHA**

Afghanistan



10
Research
cycles

200
focus-group
discussions

6,000
key informants
interviewed

41,000
household-level
surveys

Cover of the 2019 Whole of Afghanistan Assessment report which was referenced 70 times in the country's Humanitarian Response Plan. The data collected was also used to inform analysis and sectoral PiN calculations for 6 out of 7 clusters in the Humanitarian Needs Overview 2019.

Supported by

Norwegian Ministry of Foreign Affairs
ECHO
DFID
UNHCR
OCHA

14
Research
cycles

80
focus-group
discussions

10
key informants
interviewed

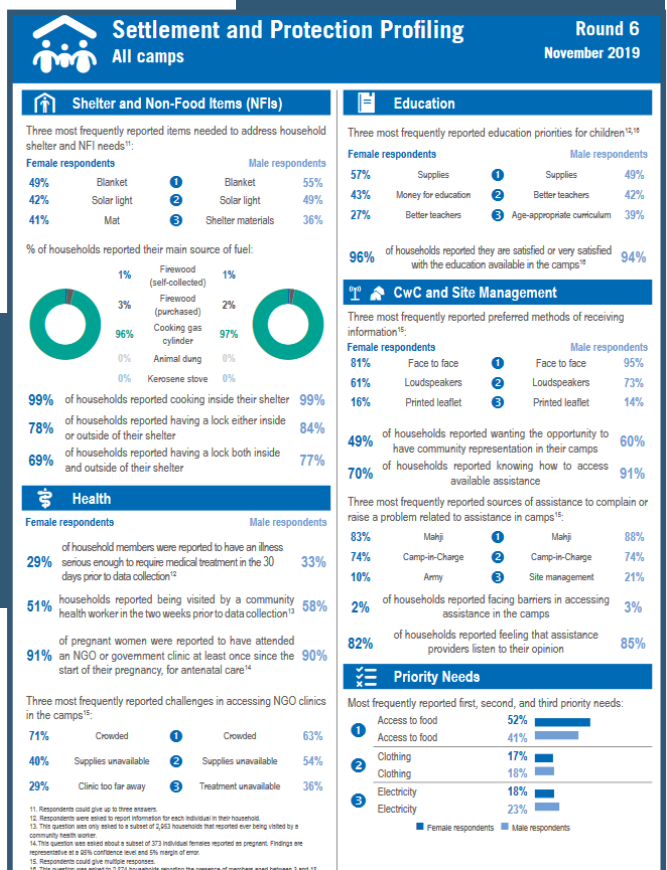
24,000
household-level
surveys

Extract from the fact-sheet of the 6th round of data collection for the Settlement & Protection Profiling assessment implemented with UNHCR. This information product was the most downloaded output published by the IMPACT team in Bangladesh, serving as a baseline for aid actors responding to the needs of vulnerable populations residing in camps.

Supported by

ECHO
UNICEF
UNHCR
IOM

Bangladesh



Central African Republic



9
Research cycles

2,700
key informants interviewed

10,000
household-level surveys

REACH enumerators progressing through hard-to-reach areas to collect data from affected populations in order to inform the 2019 Multi-Sector Needs Assessment. Findings revealed that 94% of households in CAR were facing severe or extreme humanitarian needs.

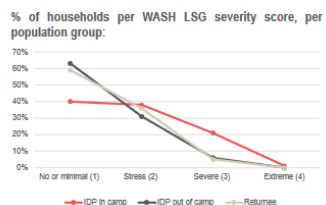
Supported by

EuropeAid
UNICEF
OFDA
UNDP

Iraq

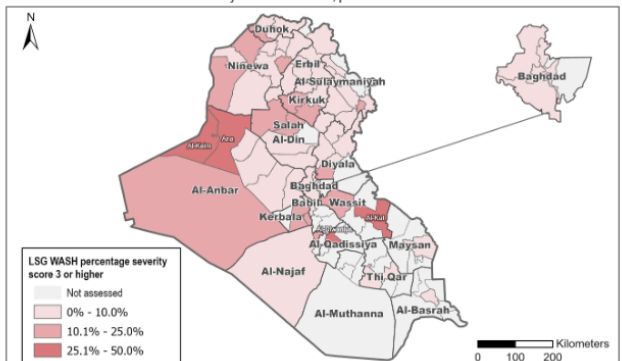
WATER, SANITATION & HYGIENE (WASH) LIVING STANDARDS GAP (LSG)¹ MCNA | 2019 IRAQ

% of households with a WASH LSG severity score of at least 3: **7%**



The WASH LSG score was primarily driven by insufficient access to safe water for drinking and domestic purposes: 19% of IDP households in camp and 31% out of camp did not have access to at least 50 liters of water per person per day in the 30 days prior to data collection. Moreover, 34% of IDP households in camp indicated they had to treat their water before drinking it.

% of households with a WASH LSG severity score of at least 3, per district:



22

Research cycles

13,000

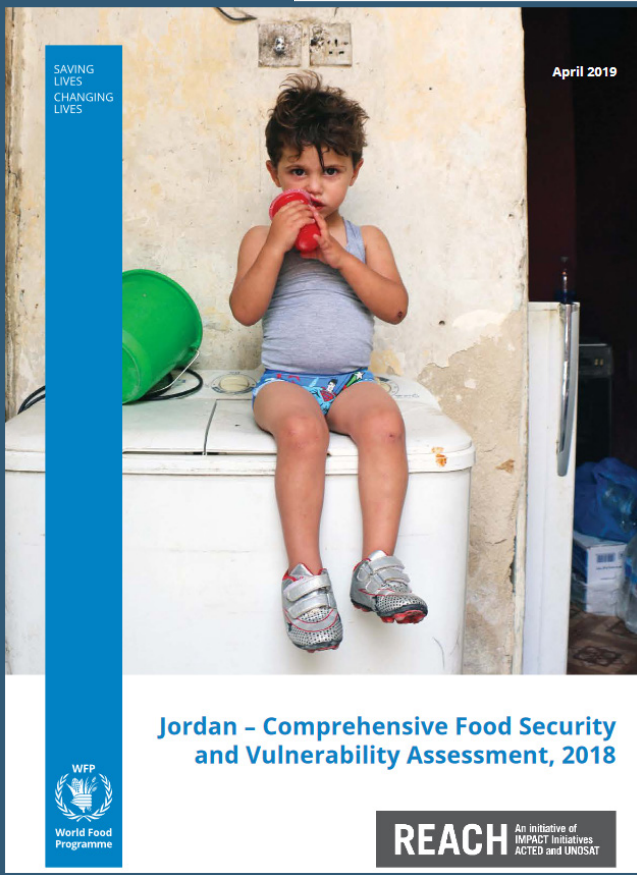
household-level surveys

Extract from the WASH fact-sheets sourced from the Multi-Cluster Needs Assessment conducted in Iraq. The final report was referenced over 160 times in the country's Humanitarian Needs Overview 2020. Highly collaborative, the data collection for the assessment involved a total of 19 humanitarian partners.

Supported by

GIZ
OCHA
UN WOMEN
FAO
OFDA
UNHCR

Jordan



SAVING LIVES
CHANGING LIVES

April 2019

Jordan - Comprehensive Food Security and Vulnerability Assessment, 2018



REACH An initiative of IMPACT Initiatives, AICTED and UNOSAT

8
Research cycles

140
focus-group discussions

130
key informants interviewed

5,000
household-level surveys

Cover photo of the Comprehensive Food Security and Vulnerability Assessment published by REACH in 2019. The report, in collaboration with WFP, was key for determining vulnerability in relation to food insecurity.

Supported by

ECHO via DRC	DFID	GIZ
IDS	ILO	UNICEF
UN WOMEN	EFP	SDC

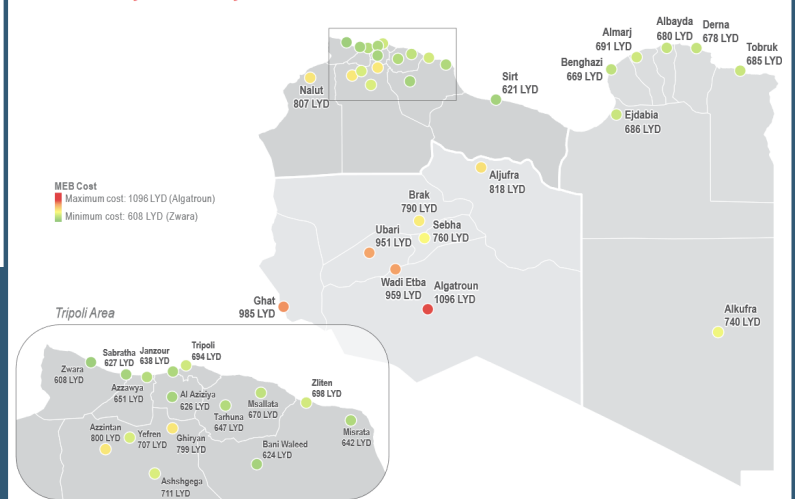
Libya

8
Research cycles

30
information products

The Joint Market Monitoring Initiative led by IMPACT in Libya is key for informing the design and adaptation of cash-based interventions. This was particularly important to respond effectively to the renewed violent clashes in the Tripoli area which created very volatile market functionality, affecting the most vulnerable. REACH teams in the country collected monthly information by monitoring the evolution in price of crucial food and household items to ensure that cash-based assistance would be aligned with up-to-date realities of the Libyan market, and its evolution through time.

Cost of MEB Key Elements by Location



Supported by

WFP	OCHA	OFDA
UNHCR		ECHO

Nigeria

12
Research
cycles

19,000
key informants
interviewed

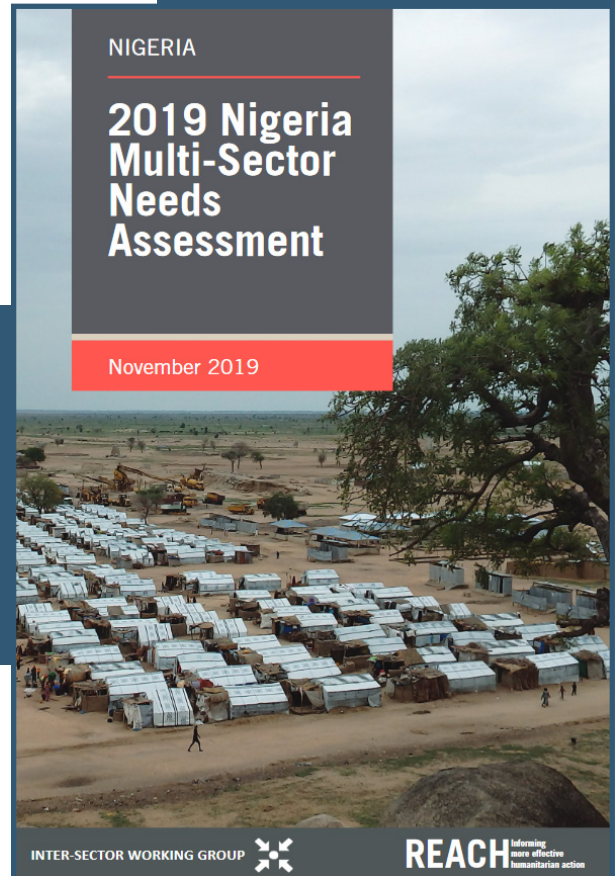
65
focus-group
discussions

27,000
household-level
surveys

The combined data collected by IMPACT teams during the Multi-Sector Needs Assessment and the humanitarian situation monitoring in Hard-to-Reach areas was paramount in filling critical information gaps on the needs and vulnerabilities of refugee, host, and IDP communities in the most crisis-affected areas of the country. In some Hard-to-Reach areas, the data collected by IMPACT was the only available, as reported by the Integrated Food Security Phase classification Global Support Unit.

Supported by

DFID ECHO
OFDA OCHA



Uganda



Supported by

ECHO via NRC
WB
WFP

5
Research
cycles

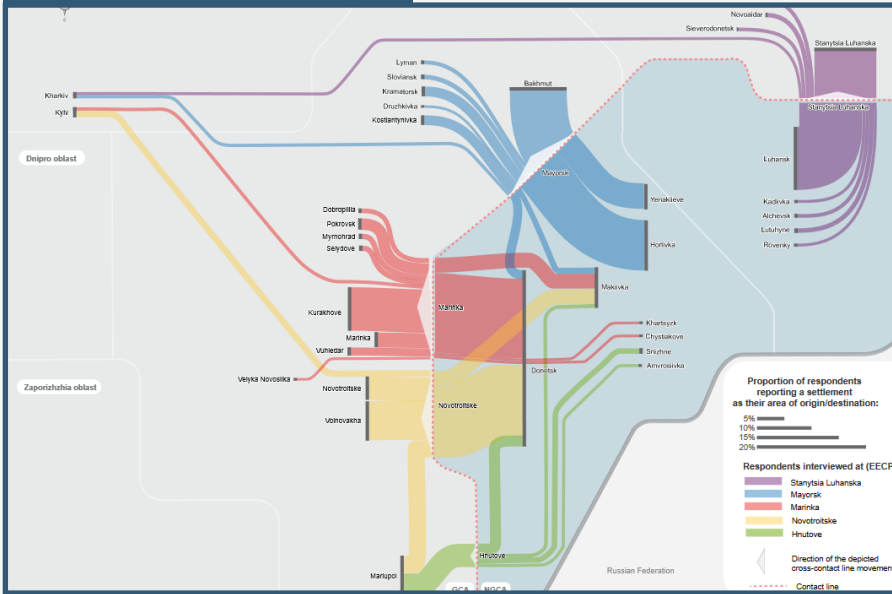
160
key informants
interviewed

160
focus-group
discussions

13,000
household-level
surveys

REACH enumerator working in collaboration with the Norwegian Refugee Council, collecting data using a mobile phone. By filling critical information gaps on Refugee's Access to Livelihoods, Housing, Land and Property, IMPACT teams informed sustainable in-camp programming by humanitarian actor.

Ukraine



7
Research
cycles

50
focus-group
discussions

1,600
key informants
interviewed

7,000
household-level
surveys

“REACH provides independent and timely information as well as in-depth analysis on the humanitarian situation in eastern Ukraine. This is precious for both donors and humanitarian organisations. It allows our partners to respond to the needs of the conflict-affected populations in an efficient and targeted manner”

- Director, Southeast Europe and Eastern Neighbourhood, ECHO

Supported by

OFDA	ECHO	UNDP
GAC	USAID	OFDA

Somalia

15
Research
cycles

5,000
key informants
interviewed

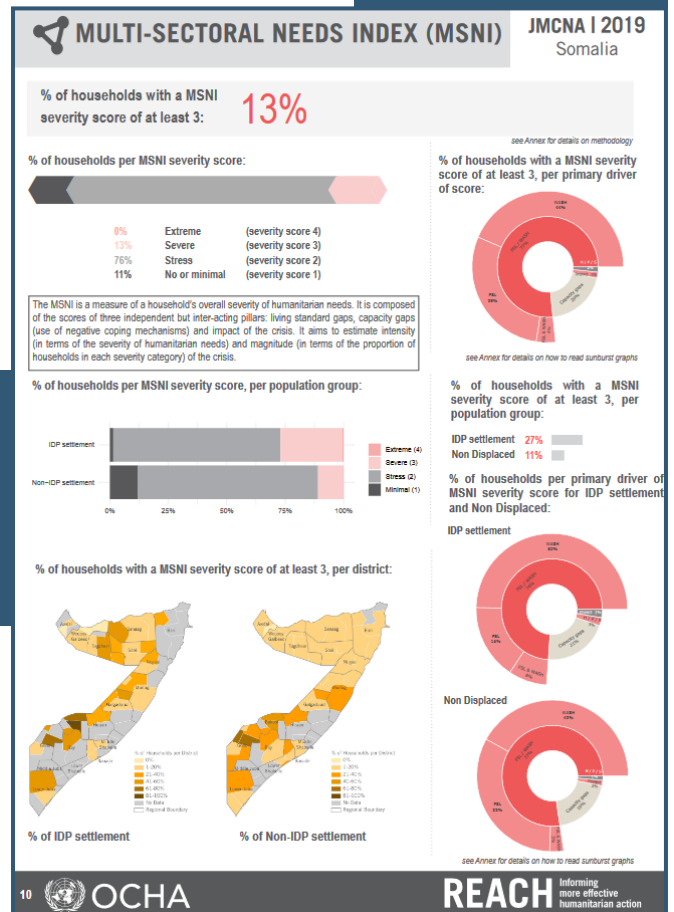
116
focus-group
discussions

31,000
household-level
surveys

Extract from the fact-sheets published to summarize the key-findings from the nationwide Joint Multi-Cluster Needs Assessment led in Somalia. As acknowledged in the country's Humanitarian Needs Overview 2020, this was the first time that comprehensive data related to disability was made available for aid actors

Supported by

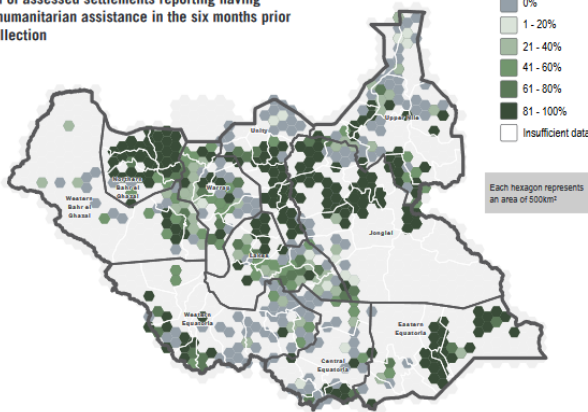
CARE	Concern	EuropeAid
DRC	UNICEF	OCHA
ECHO	OFDA	



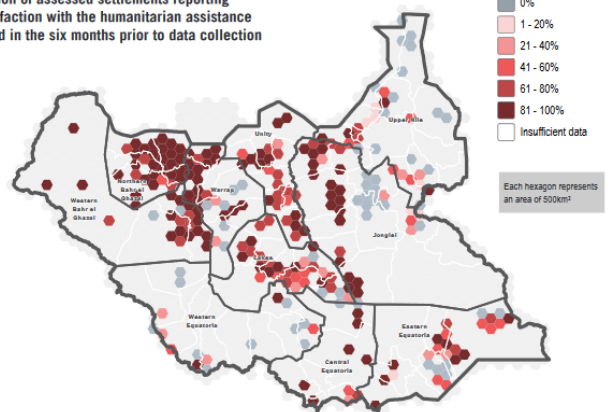
South Sudan

Receipt of humanitarian assistance & Overall satisfaction

Proportion of assessed settlements having received humanitarian assistance in the six months prior to data collection



Proportion of assessed settlements reporting dissatisfaction with the humanitarian assistance received in the six months prior to data collection



22
Research
cycles

510
information
products

IMPACT pioneered efforts to make humanitarian action more accountable and targeted by feeding data collected on Accountability to Affected Populations directly into the national Humanitarian Response Plan. This information is key for ensuring that communities are at the heart of response planning and interventions.

Supported by

UNHCR	UNICEF
ECHO	OFDA
DFID	GIZ
SDC	WFP

Syria

Rapid Needs Assessment: Aleppo and Ar-Raqqa Governorates

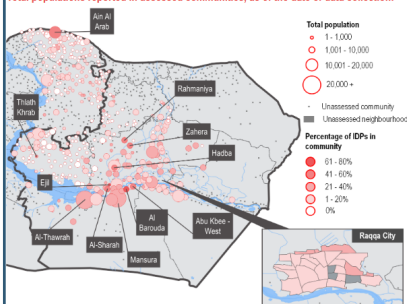
Northeast Syria, December 2019

METHODOLOGY

A remote data collection methodology was employed for this RNA, at the community level or lower, through phone interviews. On average, 2 KIs were interviewed per assessed community. KIs were selected, wherever possible, based on their knowledge of IDP and resident populations in the community, as well as their sector-specific expertise in relation to the different sectors throughout the assessment e.g. shelter, healthcare, etc. Due to the inevitably lower reliability of remote data collection compared to direct data collection, a confidence rating system was applied to each individual KI, based on the level of expertise that they held regarding the situation and sector on which they are reporting.¹

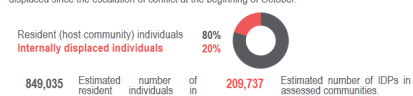
KIs were asked to report at the neighbourhood or community level. A total of 414 locations were covered, including 384 communities and 20 out of 23 neighbourhoods in Ar-Raqqa city. Data was collected between 19 and 26 December, looking at the two weeks prior to data collection. Findings are indicative rather than representative, and should not be generalised across the region. The complete dataset can be found [here](#).

Total populations reported in assessed communities, as of the date of data collection:

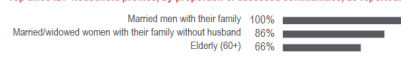


DEMOGRAPHICS [CL: 3/3]²

An estimated 849,035 residents (141,506 households) were living across all assessed communities at the time of data collection. Of these communities, KIs reported that a total of 228 communities were hosting 209,737 IDPs (35,692 IDP households), with IDPs making up 25% of the total population. KIs reported in 142 of the assessed communities were hosting IDPs who had been displaced since the escalation of conflict at the beginning of October.



Top three IDP household profiles, by proportion of assessed communities, as reported:³



PRIORITY NEEDS [CL: 3/3]⁴

Top three reported priority needs, by number of assessed communities, for residents and IDPs:⁵

	1st	2nd	3rd		1st	2nd	3rd
Safety and security	40	3	0	Safety and security	5	3	1
Shelter	2	4	1	Shelter	27	5	0
Health	166	61	40	Health	3	12	21
NFIs	14	23	25	NFIs	10	31	6
Food	37	41	78	Food	33	27	25
Education	10	62	52	Education	1	1	5
Water, sanitation and hygiene	6	15	19	Water, sanitation and hygiene	2	6	5
Protection	3	2	1	Protection	3	3	4
Livelihoods	50	87	84	Livelihoods	17	31	27
Winterisation or equivalent	63	77	114	Winterisation or equivalent	41	23	14

26
Research
cycles

6,000
key informants
interviewed

200
focus-group
discussions

41,000
household-level
surveys

Supported by

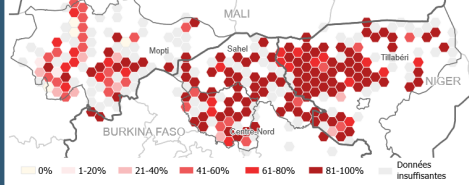
FCO	OFDA	ECHO
SDC	UNHCR	
USAID	UNICEF	

"The timing of the Camps and Sites Rapid Assessment in Northwest Syria was good. I don't know if it is humanly possible to share in shorter time. It was very useful to prioritize and rationalize our response."

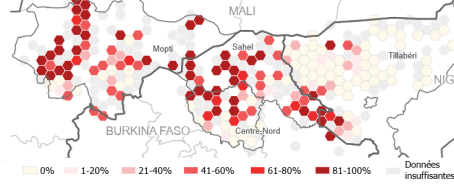
- Humanitarian Donor, Syria

Tri-border area: Burkina Faso, Mali, Niger

% of settlements where KIs reported inadequate access to food for the majority of the population



% of settlements where KIs reported a lack of access to functional educational services within walking distance



Key results

Proportion of assessed settlements reporting over the past month:	Mali	Burkina Faso		Niger
	Mopti	Centre-Nord	Sahel	Tillabéri
A presence of internally displaced persons (IDPs)	48%	70%	57%	7%
The arrival of new IDPs during the past month	23%	50%	48%	4%
Inadequate access to food for the majority of the population	63%	81%	96%	86%
Disruption of usual livelihoods for the majority of the population	88%	45%	76%	48%
Lack of access to functional health services within walking distance	29%	47%	59%	9%
Lack of access to functional nutrition services within walking distance	58%	55%	67%	35%
Insufficient access to water	26%	68%	90%	44%
The majority of IDPs living in very precarious shelter conditions ^{1,2}	31%	21%	52%	30%
Lack of access to functional educational services within walking distance	63%	43%	70%	12%
The majority of the population not feeling safe	87%	63%	87%	60%

Supported by

- ECHO
- OFDA
- MERF
- EUTF
- BPRM
- UNICEF

13 Research cycles
290 focus-group discussions
6,000 key informants interviewed
5,500 household-level surveys

In a context characterized by a climate of insecurity, criminality, and rising tensions between communities, the monthly updates of the severity of multi-sectoral needs of populations living in the tri-border area between Burkina Faso, Mali and Niger, including in hard-to-reach areas, is instrumental for effectively responding to the needs of the most vulnerable in the region, and monitoring the evolution in time.

3,200 key informants interviewed
145 information products
22 Research cycles

The establishment and maintenance of monitoring systems for the WASH and CCCM Clusters, as well as the Cash & Market Working Group in Yemen, has ensured that IMPACT is able to feed regular sources of data in a reliable and timely manner for aid actors to quickly respond to needs and gaps in areas which are known to be volatile.

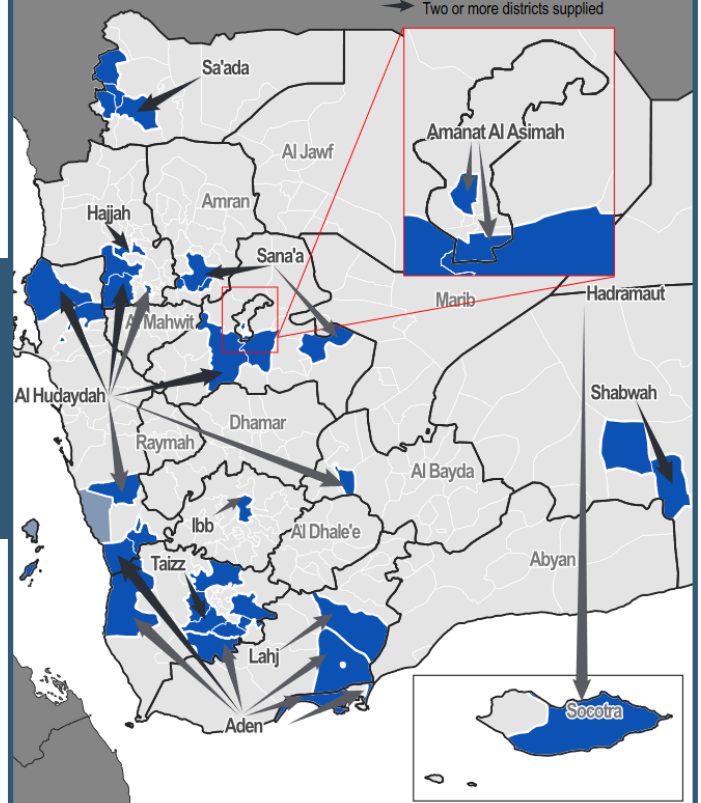
Supported by

- OCHA
- OFDA

Yemen

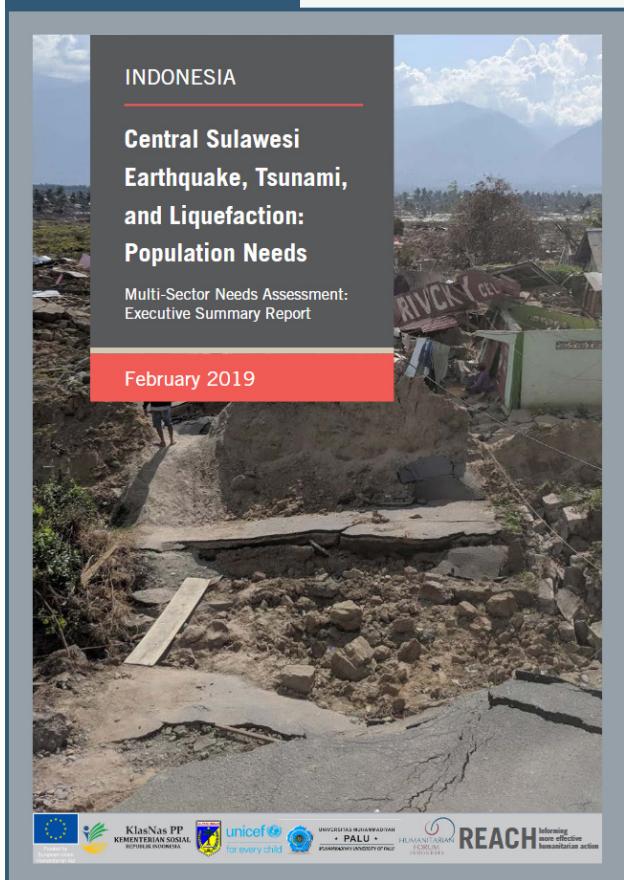
WASH SMEB Supply Chain Overview

- Supply destination
- Districts without a main supplier
 - Districts with a main supplier
 - One district supplied
 - Two or more districts supplied



RAPID DEPLOYMENTS

Indonesia



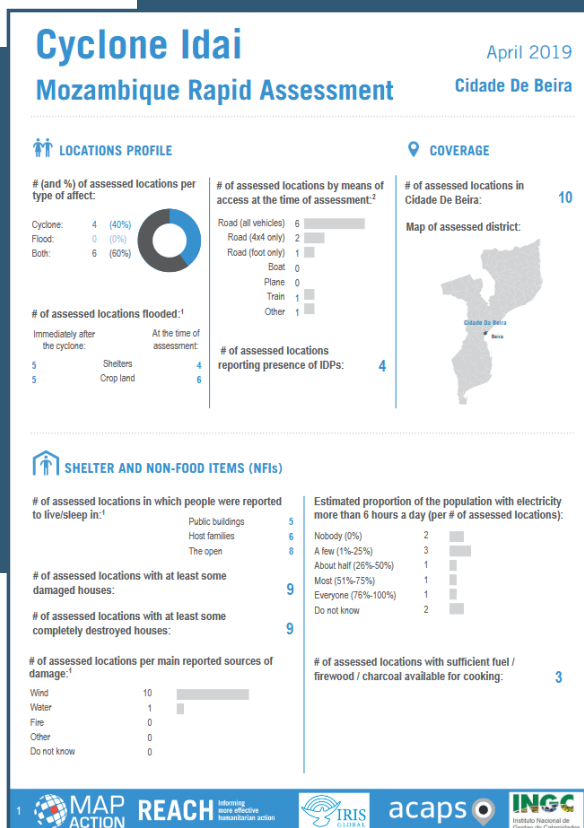
In the weeks after the magnitude 7.7 earthquake hit the Central Sulawesi Province in Indonesia, very little information was available on the needs and displacement situation of the population affected by liquefaction and the destruction of the tsunami. In order to address the needs of the population, REACH, as a standby partner to UNICEF, supported the Humanitarian Forum Indonesia to conduct a household-level multi-sector needs assessment on behalf of the Ministry of Social Affairs and the Government of Central Sulawesi Province. The assessment covered 38 sub-districts, providing aid actors with an evidence-base from which to address the needs of affected households.

Supported by

ECHO

Mozambique

Two weeks after Cyclone Idai swept across Mozambique, REACH deployed a mapping and survey exercise across the hardest hit regions to address the needs of populations affected by the destruction. The assessment reached far beyond urban centres and main settlements- to areas where access was only possible by foot, boat, or SUV. The rapid multi-sector needs assessment led by REACH was the only in-depth source of information available during the aftermath of Idai and was disseminated to aid actors operating locally, to inform their response and ensure that populations living in hard-to-reach areas were not left behind. After data collection, REACH teams treated the data into a comprehensive analysis covering all humanitarian sectors, enabling a significant contribution towards providing life-saving aid.

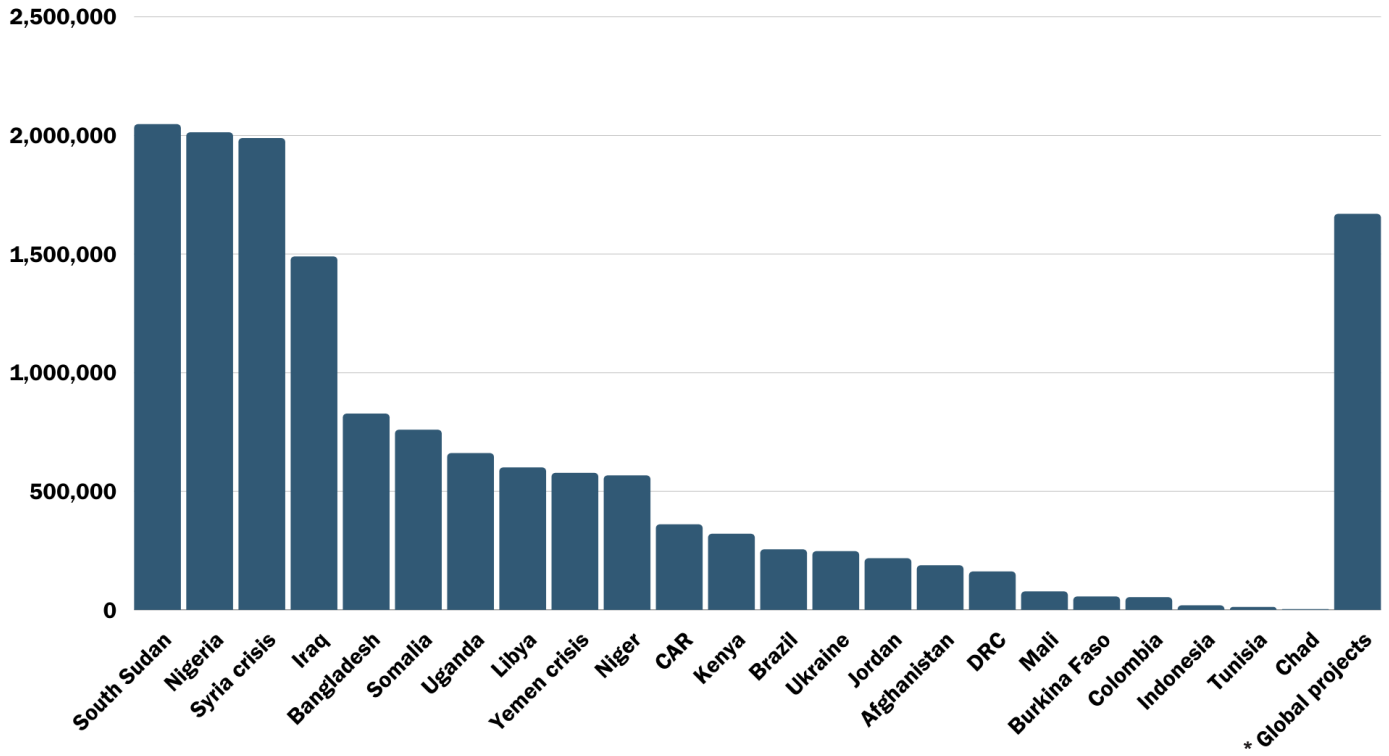


Supported by

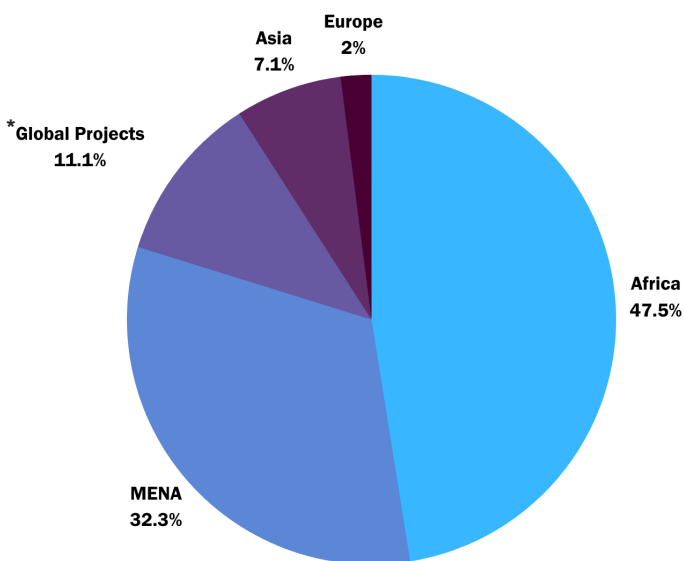
ECHO

FINANCIAL OVERVIEW

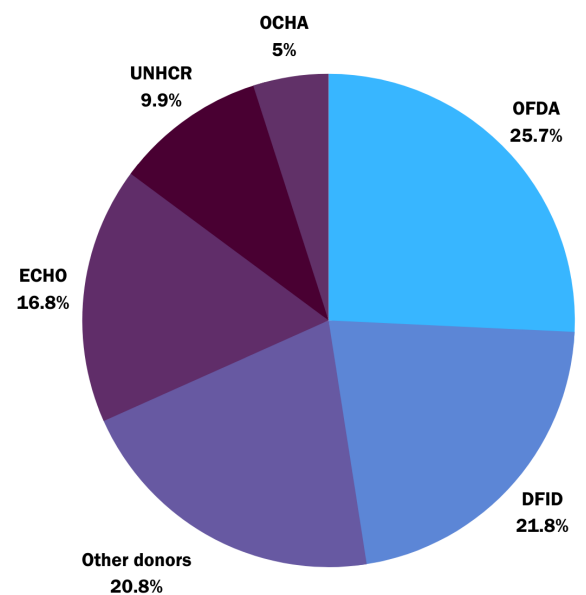
In 2019, IMPACT's annual budget amounted to 15,147,649 CHF.



Geographic breakdown



Budget per donor



* Projects implemented from HQ with potentially short term deployment in different countries

GOVERNANCE

The association of IMPACT Initiatives is governed by a General Assembly composed of six members, of whom five make up the Committee.

The General Assembly is composed of six members and meets at least yearly as an Ordinary General Assembly. Extraordinary General Assemblies can be called by the Committee.

The General Assembly approves the yearly Report and Accounts as well as the provisional budget of the Association. In addition to this, it decides any modification to the statutes.

Our members

- Marie-Pierre Caley (President)
- Eric Deschoenmaeker (Treasurer)

- Sebastien Lyon
- Luigi de Martino (Secretary)

- Frederic Roussel
- Philip Sargisson

The senior management team provides oversight to the entirety of IMPACT processes and projects. This oversight includes project cycle management, logistic support, financial support, research backstopping and validation, and overall programmatic guidance.

In 2019, the senior management team based in Geneva consisted of:

Luca Pupulin - Executive Director

Emilie Poisson - Deputy Executive Director

Vincent Annoni - Deputy Executive Director

Phil Bato - Head of Country Programs
Middle East, Asia, and Latin America

Joelle Melin - Head of Grants and Procurement

Angela Rey-Baltar - Head of Finance and Human Resources

Katie Rickard - Head of Country Programs
Africa and Europe

Elisabeth Vikman - Head of Research



Photography taken during the Global Workshop 2019 hosted by IMPACT in its HQ. The Global Workshop is an opportunity for members of the IMPACT family from around the world to reunite and share best practices from previous years.

PARTNERSHIPS

IMPACT promotes a collaborative approach and supports established inter-agency coordination mechanisms at global and country levels. In 2019, IMPACT continued to strengthen its role in the global humanitarian system, notably through its participation in several bodies of the Inter-Agency Standing Committee as well as through its active engagement in global clusters and in Grand Bargain workstreams.

OUR SISTER ORGANISATION



ACTED is IMPACT's sister organisation. ACTED hosts and facilitates REACH initiative's field operations and leads AGORA's project implementation.

MEMBER OF JOINT INITIATIVES

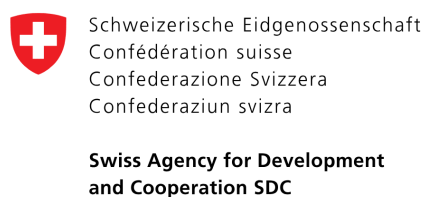


The United Nations Institute for Training and Research (UNITAR)'s Operational Satellite Applications Programme (UNOSAT) provides REACH with remote sensing expertise and technical support.

DONOR AGENCIES



European Union
Civil Protection and
Humanitarian Aid



GLOBAL CLUSTERS



UN AGENCIES



OTHER PARTNERS





www.impact-initiatives.org
www.reach-initiative.org
www.reachresourcecentre.org



@IMPACT_init
@REACH_info



@IMPACT Initiatives



9 chemin de Balexert
1219 Geneva
Switzerland



+41 22 566 29 63



geneva@impact-initiatives.org

Shaping practices
Influencing policies
Impacting lives

IMPACT